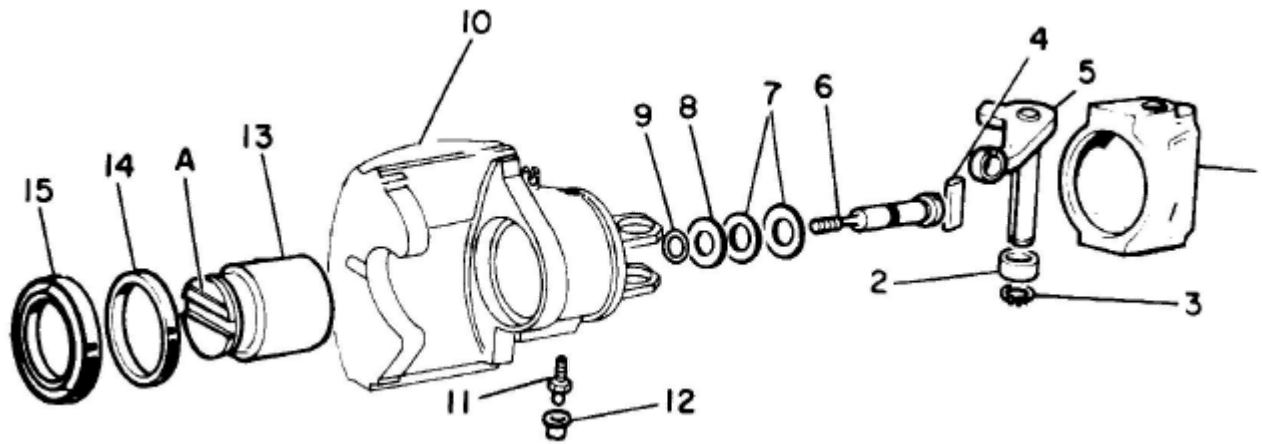


Is the slot in the back end of the handbrake adjuster thingo the right way around? (there is a "high" side and a "low" side). Part #6 in this diagram



If not the "wedge" (part #4) can partially pop out and jam the handbrake partly on. The clue here is that the piston is reluctant to screw back in - but probably worked fine on the bench before the first time the handbrake lever was moved (either when installing the cable or operating the handbrake from the cabin depending on cable re-connection method) when installed on the car.

Easy to check on the car - peel back the boot on the rear of the caliper and get someone to operate the handbrake. You'll soon see if you've got a problem there.